



# QUESTION & ANSWER

HIGHER QUALITY, BETTER SERVICE

**Provide One Year Free Update!**

<https://www.passquestion.com>

**Exam** : **75940X**

**Title** : Avaya Converged Platform  
Integration Exam

**Version** : DEMO

1.A new ESXi host has been added to the ACP 4200.

However, unlike existing ESXi hosts within the ACP 4200, the new host cannot be monitored or detected by Avaya Orchestrator.

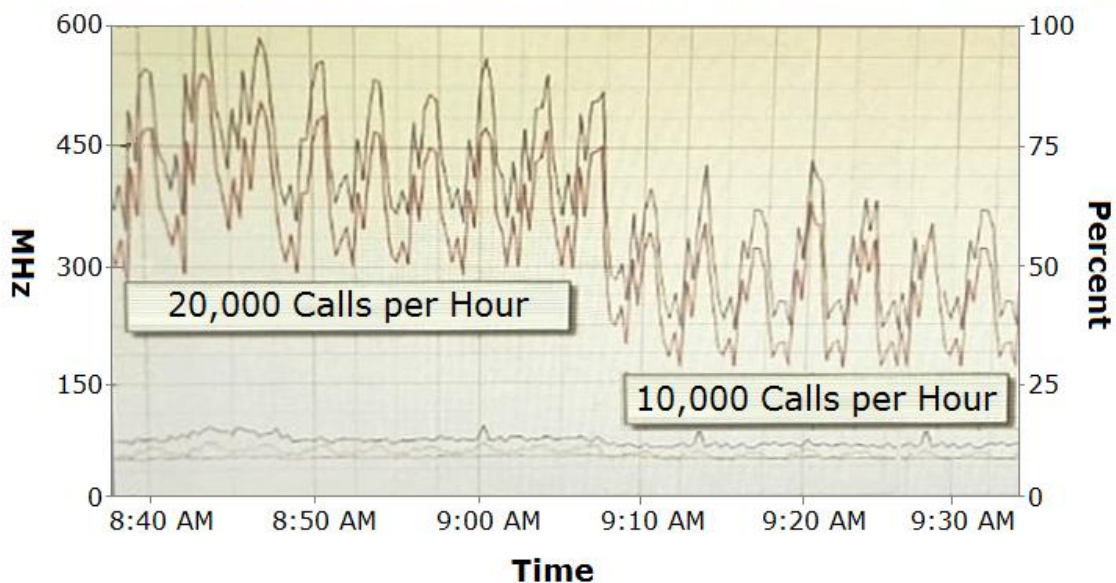
What is causing this problem?

- A. The new host has not been correctly configured to support vMotion.
- B. The new host has not been added to Avaya Orchestrator.
- C. The new host has not been licensed yet.
- D. The new host has not been configured for Auto Detection.

**Answer: B**

2.Refer to the exhibit.

**CPU/Real-time, 2/15/2013 8:37:49 AM - 2/15/2013 9:37:49 AM - cpodCM1**



**Performance Chart Legend**

Key	Object	Measurement	Rollup	Units
0		Usage in MHz	average	MHz
1		Usage in MHz	average	MHz
cpodCM1	cpodCM1	Usage	average	Percent
cpodCM1	cpodCM1	Usage in MHz	average	MHz
2		Usage in MHz	average	MHz

The CPU performance of Communication Manager (CM) shows a significant difference depending on the call rates.

Which statement about making configuration changes is true?

- A. Increasing the number of Virtual CPUs allocated to CM might help to reduce this difference.
- B. Ensuring that a secondary CM is available to allow for load-balancing might help to reduce this difference.
- C. Migrating the CM Virtual Machine to another ESXi host that is less busy might help to reduce this difference.

D. Reducing this difference is not necessary because this is expected behavior.

**Answer: B**

3. With ACP 4200, what is mandatory to ensure Avaya Aura® High Availability across the two Data Centers?

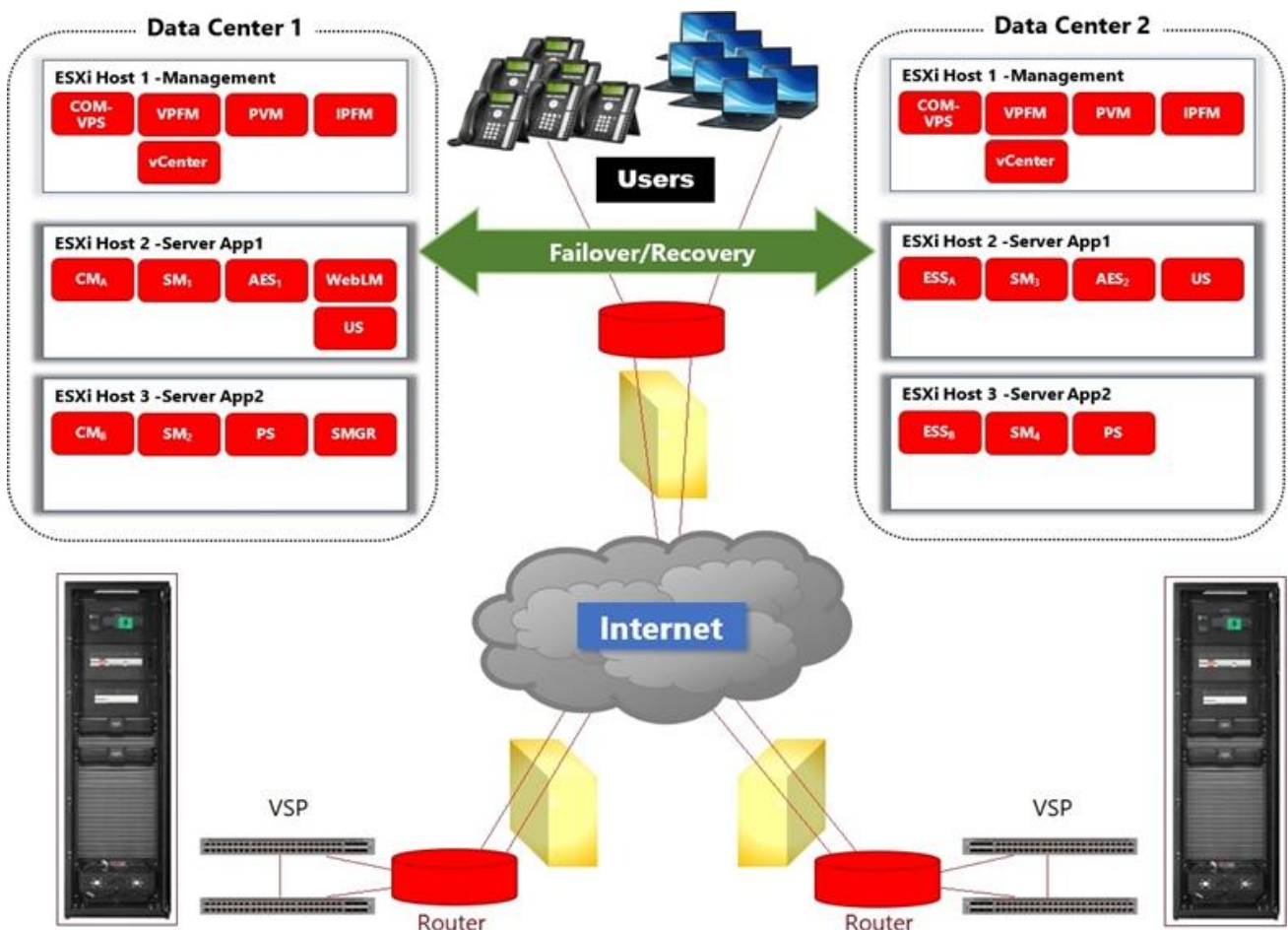
- A. A single vCenter Server that manages both Data Centers.
- B. Network connectivity to and in between the two Data Centers.
- C. Identical compute servers in both Data Centers.
- D. The same VLANs in both Data Centers.

**Answer: A**

**Explanation:**

Reference: <https://downloads.avaya.com/css/P8/documents/101054952> (9)

4. Refer to the exhibit.



In the deployment shown in the exhibit, how is High Availability achieved across the two Data Centers?

- A. By ensuring that the L2 VLANs are extended across to both Data Centers.
- B. By managing both Data Centers using the same vCenter Server and using vMotion and DRS.
- C. By using Virtualization Provisioning Service (VPS) to automate the provisioning of the network hardware and vSwitches across the two Data Centers.
- D. By using Avaya Aura® Application High Availability features.

**Answer: C**

**Explanation:**

Reference: <https://downloads.avaya.com/css/P8/documents/100182353>

5. Which two circumstances would require the Avaya Orchestrator ACP Configuration Wizard to be run in the field? (Choose two.)

- A. When a new G450 Gateway is added to the ACP.
- B. When a new configuration file for the ACP's VSP Switches is deployed.
- C. When a new Virtual Machine is added to the ACP.
- D. When a new ESXi Host is added to the ACP.

**Answer:** BD

**Explanation:**

Reference: <https://downloads.avaya.com/css/P8/documents/101061680>